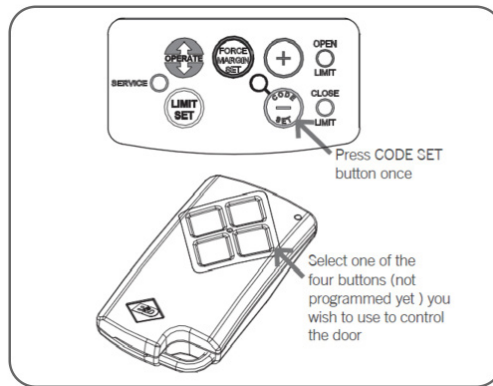


CODING B&D TRANSMITTERS

*This information is intended as a guide only.
For detailed information please refer to
the owners hand book, manual or the manufactures web site.*



Storing the Transmitter Code

The opener can only operated from remote control transmitters that have been programmed into its memory. Up to fourteen (14) codes can be stored in the memory.

- Ensure that the battery is inserted in the transmitter.
- Press the CODE SET button and release. The CODE SET LED will illuminate the opener is in Code Learn mode. If a valid code is not stored within 15 seconds the opener will exit.
- Press the transmitter button (one of four) that you want to control the door. The CODE SET LED will flash.
- Press the same transmitter button again. The CODE SET LED will illuminate for one second then go out.
- The transmitter button is now coded - press to text.

